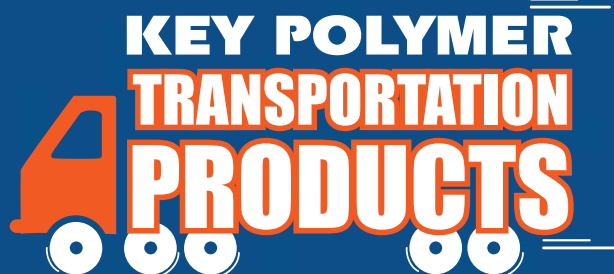


APPLICATION INSTRUCTIONS

KEY POLYMER FLOOR RESTORE THE ORIGINAL[®]

For Wood Truck and Trailer Floors
For Industrial Use Only

READ THIS
FIRST
BEFORE
YOU START!



WWW.KEYFLOORRESTORE.COM

APPLICATION INSTRUCTIONS

KEY POLYMER **FLOOR RESTORE**® THE ORIGINAL



TABLE OF CONTENTS

Planning	3-4	Old Floor Instructions.....	6
Tools.....	4	New Floor Instructions	8
Video Instructions	5	Special Situations.....	10
Safe Handling	5		

“ *I'm sold on it. I've been in the business all my life and this is one of the best products I have ever seen on the market. The process of protecting that floor is just as critical as replacing the brakes, if you want longevity out of that. Because once your floor goes, it's a big cost factor onto a trailer. We have no repairs that develop when we started using the floor restore onto new floors. Our life, we could see, is extended tremendously.*

– Ed Gaynor - Rapture Trailer, Philadelphia

PLANNING

 **READ this section before scheduling the install.**
Please be sure that this kit is the right one for the job.

Original FLOOR RESTORE is available in kits sized to repair, restore and protect a typical 28, 48 or 53-foot trailer.

New Trailers Floors

It may only take half a kit of KEY FLOOR RESTORE® to protect a new floor. Additional material may be needed to complete your floor because of the appearance and variances within the wood.

KEY FLOOR RESTORE® is not recommended for flatbeds or trailer floors that have been treated with wax or oil penetrant.

Furniture Van Floors

There is another Floor Restore for Furniture Haulers.

The Floor Restore product that you are about to use, KEY FLOOR RESTORE® is formulated for application on dry freight vans. If your application requires a high gloss finish, such as a furniture van floor, you should use our high gloss floor restore coating, SMOOTH MOVE.

Old, Dry and Severely Gouged Floors

Occasionally the full kit will not be enough if the floor has dried out with many gouges and gaps between boards. Also for daylight showing gaps use of KEY FP100 Crack Filler immediately before the Floor Restore application is necessary. This is explained in the application instructions.

PLANNING CONTINUED

★ Before using, store the kit at 65°F to 75°F for 24 hours. Do not use if temperature of work area is less than 65°F, unless trailer is heated first with a torpedo heater. Remove heater before starting to work.

Application Conditions

Apply at 65°F to 85°F. If applied at higher temperature, the product will start to cure and be impossible to apply before you can complete the installation.

Dilution

NEVER ADD ANY SOLVENT.
FLOOR RESTORE NEEDS ONLY MIXING TO BE READY TO USE!

Drying/curing time

Floor Restore will dry in 24 hours if trailer is kept at 70°F after installation.

Second coat if desired

You usually need to apply only one coat. If a second coat is preferred, it should be applied after the initial application has cured, and before the unit goes into service. A second coat will increase the slip factor and create a higher gloss.

Tools: In addition to the kit you will need:

- SHOP VAC to clean out the delaminations
- Rags and access to warm soapy water to clean tools
- Broom Stick Handle for Squeegee
- Floor Sander is needed only when the floor is in very bad condition with many splits sticking up, or if the owner desires a floor that will have the best possible even color for eye appeal. Home Depot rents these at low cost.
- Masking Tape to assure a clean line at the steel nose and the tailboard
- Eye protection in case of a splash



Optional



INSTALLATION TIP VIDEO. WATCH IT NOW!

<http://www.keypolymer.com/transportation-products/original/>

- It takes just a few minutes to assure that you will do a great job quickly. Please read the following instructions carefully and if possible watch the installation video.



SAFE HANDLING

FLOOR RESTORE is a safe product that will not harm you or the environment when used correctly.

- Avoid contact with skin; wear gloves, wash thoroughly after use.
- Wear protective goggles.
- Keep open flames and welding operations away from work area.
- Provide adequate ventilation.
- Do not smoke or eat while working with this product.

For additional information refer to the enclosed SAFETY DATA SHEET.



**FOR ANY QUESTIONS, JUST CONTACT KEY POLYMER
BEFORE STARTING THE JOB.**

1-978-683-9411 www.keypolymer.com



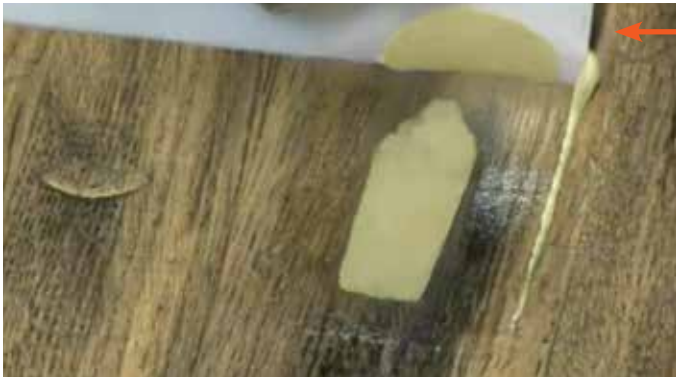
“ I have used your Floor Restore and Crack Filler for my trailers and the products work great. I have been very satisfied with your products.

– Michael G. Shay
General Manager, Two Sisters Moving Company

OLD FLOOR INSTRUCTIONS

CLEAN

- Clean the trailer floor by vacuuming to remove loose dirt from cracks and delaminations. Be sure the Shop Vac is not clogged.
- If the trailer floor has oil build-up it will be necessary to steam clean the floor, allowing it to dry thoroughly before coating.



REPAIR

- Close the trailer door, and walk the length of the trailer looking for daylight to appear.
- Repair “daylight” gaps and very deep gouges with Key Polymer FP100 CRACK FILLER. It is also best to use the Crack Filler to fill deep gouges. FP100 will seal cracks and splits up to approximately 1/4” wide without running out.
- No need to wait before starting your KEY FLOOR RESTORE® application.

HINT: Mask off the steel nose and tailboard to assure a clean line, with no Floor Restore excess.

MIX

- Mix FLOOR RESTORE only when ready to use. **Mix only one A & B set at a time.** You will have approximately 40 minutes to use the mixed material, at 65-70°F. If the temperature is higher, you will have less working time.
- Pour one part B container into one part A container and MIX FOR 5 MINUTES WITH STIR STICK PROVIDED. WHEN MIXING, BE SURE TO SCRAPE SIDE WALLS AND BOTTOM OF THE CONTAINER AS YOU STIR.



POUR

- Pour mixed FLOOR RESTORE into any remaining deep or large gouges that do not show daylight.
- Pour 1/4 of the mixed FLOOR RESTORE material across the nose of the trailer floor.

HINT: In hot weather pour the whole mixed bucket down the center of about 20 feet of the floor in a stripe. This extends working time.



APPLY

- Use the 18" squeegee in the kit to draw the Floor Restore back. Use an even, firm back and forth motion to force the FLOOR RESTORE into the wood and screw holes.
- Draw the Floor Restore back approximately 6 feet across the trailer floor.
- Remove excess from the squeegee while working by tapping it clean on an un-treated section of the floor.
- Make one final pass over the coated area applying firm pressure. It is important to push the Floor Restore into the grain and delaminations.
- Pour an additional 1/4 of the mixed material across the floor where you left off, and repeat.
- Mix the second half of the kit now, and repeat if using a 48 or 53 foot kit on an old floor.
- Part of another kit may be needed in a few instances when the floor is very porous, has many splits and gouges or is very dry.

HINT: A piece of scrap cardboard on the tailboard beyond the coating area will be a great place to tap excess off the squeegee as you come to the end of job.

NOW YOUR FLOOR IS COMPLETE!



“We have no repairs that have developed since we have started using Floor Restore on our new trailer floors. So our trailer life as you can see is extended tremendously.”

– Brian Potter
Operations Manager – Maume Express, Abingon, VA

NEW FLOOR INSTRUCTIONS

CLEAN

- If the trailer floor has been coated with a waxy or oily material you should wait 6 months before applying KEY FLOOR RESTORE®. It will then be necessary to steam clean the floor, allowing it to dry thoroughly before coating.
- Clean the trailer floor by vacuuming to remove loose dirt from cracks and delaminations. Be sure the Shop Vac is not clogged.



HINT: Mask off the steel nose and tailboard to assure a clean line, with no Floor Restore excess.



MIX

- Mix FLOOR RESTORE only when ready to use. **Mix only one A & B set at a time.** You will have approximately 40 minutes to use the mixed material, at 65-70°F. If the temperature is higher, you will have less working time.
- Pour one part B container into one part A container and MIX FOR 5 MINUTES WITH STIR STICK PROVIDED. WHEN MIXING, BE SURE TO SCRAPE SIDE WALLS AND BOTTOM OF THE CONTAINER AS YOU STIR.

POUR

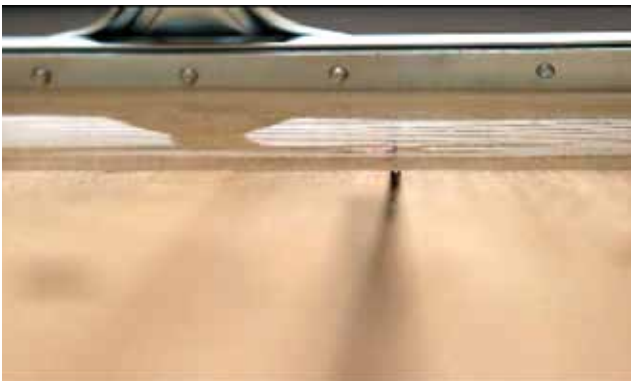
- Pour 1/4 of the mixed FLOOR RESTORE material across the nose of the trailer floor.

HINT: In hot weather pour the whole mixed bucket down the center of about 20 feet of the floor in a stripe. This extends working time.



APPLY

- Use the 18" squeegee in the kit to draw the Floor Restore back. Use an even, firm back and forth motion to force the FLOOR RESTORE into the wood and screw holes.
- Draw the Floor Restore back approximately 6 feet across the trailer floor.
- Remove excess from the squeegee while working by rubbing it clean on an un-treated section of the floor.
- Make one final pass over the coated area applying firm pressure. It is important to push the Floor Restore into the grain and any delaminations.
- Pour an additional 1/4 of material across the floor where you left off, and repeat.



HINT: A piece of scrap cardboard on the tailboard beyond the coating area will be a great place to tap excess off the squeegee as you come to the end of job.

NOW YOUR FLOOR IS COMPLETE!

“ We have been using the Floor Restore for approximately three years. In certain applications, there are federal regulations for the particular products that are being transported in those trailers. There are the requirements for making the floor impenetrable to liquids and that is what necessitates the floor restore kit. They haul liquids, any bodily fluids, blood, anything else related to hospital surgery. The customer is satisfied with the appliance of it, as well as the impenetrability that it provides to the flooring.

– Dave Eisen, Senior V.P. Commercial Trailer Leasing, North Bergern, NJ

SPECIAL SITUATIONS

Delamination of Glue Lines

- KEY FLOOR RESTORE® will fill and seal gouges and surface delaminations. However it will run through “daylight” openings. Key Polymer FP100 CRACK FILLER fills “daylight” delaminations to make a durable repair that will not crack or pop out. It can be used alone or as part of a full floor restoration. Key Floor Restore® may be applied immediately without waiting for the Crack Filler to cure.

Large Gouges And Cupped Floor Boards Caused By Carts With Wheels

- You may use KEY FLOOR RESTORE® or KEY FP100 CRACK FILLER. Simply clean out the area, remove as much dirt and grease as possible.
- Pour FLOOR RESTORE into the gouge. Spread out with squeegee and continue the application.
- If the gouge is deep KEY FP100 CRACK FILLER can be used before the KEY FLOOR RESTORE® application.

Water Damage

- The harsh effects of water causes many problems for wood floors. Seal the surface of the wood with KEY FLOOR RESTORE®. This builds a new epoxy/wood composite floor surface that washes out easily and inhibits the absorption of water.

Slippery Floors

- Non-slip properties can be added while installing FLOOR RESTORE, to all of the floor, or the rear end only. KEY SLIP STOP, available from FLOOR RESTORE dealers, is mixed into FLOOR RESTORE while you are doing the application.

Spill-Prone Cargo

Spills can cause a multitude of problems even if a liquid is not hazardous. If the trailer is likely to encounter liquid spills in service follow these steps:

- Follow the Floor Restore Instructions for New or Old Trailers with the following added steps:
 - Repair all damaged side walls and aluminum side rails. Flood the sidewall joints when applying the Floor Restore to assure a tight seal.
- Fabricate a 12” gate to place across the rear of the trailer. The gate must be lifted and replaced each time the vehicle is loaded or unloaded. If you would like more information about this program, contact your local dealer.

Acid Damage

- Unfortunately, if the floor has already been exposed to acid damage, the exposed section of flooring will have to be cut out and new flooring sectioned in before application of KEY FLOOR RESTORE®.



KEY POLYMER
FLOOR
RESTORE®
THE ORIGINAL

Watch the online
Video Instructions at
www.keyfloorrestore.com



Visit us at
www.keypolymer.com
to see our other great
Key Polymer
transportation products.

KEY POLYMER FLOOR RESTORE®

THE ORIGINAL



Watch the online Video Instructions
at www.keyfloorrestore.com

Visit us at www.keypolymer.com to see
our other great Key Polymer
transportation products.

KEY POLYMER TRANSPORTATION PRODUCTS



Key Polymer Corporation
17 Shepard Street, Lawrence, MA 01843
www.keypolymer.com
1-978-683-9411